

# ARBEGUST STREET BRANCH A RAILROAD YOU CAN MODEL

By Bob Dawson, Division 8 MCR NMRA

The Arbegust Street Branch can be modeled as a stand alone railroad or as a branch on a larger layout. Modeling it in the late 1940's or early 1950's would offer the most operational possibilities. Today the branch serves one customer, a distillery that received tank cars of whiskey from Canada.

The east end of the branch (14<sup>th</sup> to 21st Streets) contained the most concentrated variety of industries. There was a several block stretch of single track from 21<sup>st</sup> to 24<sup>th</sup> and then another cluster of industries. Main features of the branch (refer to track chart and industry list on second page.):

- A small stub end yard at the junction to receive and sort cars for delivery.
- Both trailing and facing spurs, and numerous run-a-round tracks.
- In the 1950's most shipments were handled in box cars.
- Goodwin Preserving Company may have received fruit in refrigerator cars. Finished jams and jellies may have been shipped out in the same refrigerator cars. Especially in the winter to keep them from freezing. Jars would be delivered in box cars.
- In later years the distilleries would take grain in covered hopper cars.
- Tobacco was received and cigarettes shipped out in box cars.

## Research resources:

Sanborn Insurance maps: This one of best sources available. Sanborn insurance were large scale maps published from 1867 to 1970's were designed to be used by insurance underwriter to determine risk. They covered over 12,000 American Cities They include the outline of each building, the size, shape and construction materials, heights, and function of structures, location of windows and doors. They also show streets, alleys and railroad tracks. I used Microfilm and printed copies on file at a local historical society. They are available on line from ProQuest, LLC. Access is limited to subscribing educational institutions. You local university or historical society may be a subscriber.

## Resources I found at my local public library:

**USGS 1" = 2000' quadrangle maps.** These show streets, terrain features and railroad tracks. You can't get details but they will show double track, sidings, etc. I found maps from the late 1940's up to today. Current maps can be found on line or purchased at maps stores, and from your state government.

**Clippings files.** These were articles from the newspapers (1915 to 1980 something) cut out pasted on sheets and filed in boxes by the Dewey decimal system. My library also had indexes to articles on file cards for the same period. Unfortunately none of this has been digitized. I don't know if any other libraries did this. Back issues Newspapers can usually be found on micro-film.

**Historic city atlases and maps:** The local title company published a book in 1883 showing streets, buildings, railroads, and owners. A company called Beers & Lannagan published maps in the 19<sup>th</sup> Century of towns and cities across America. These are really helpful when researching rural areas.

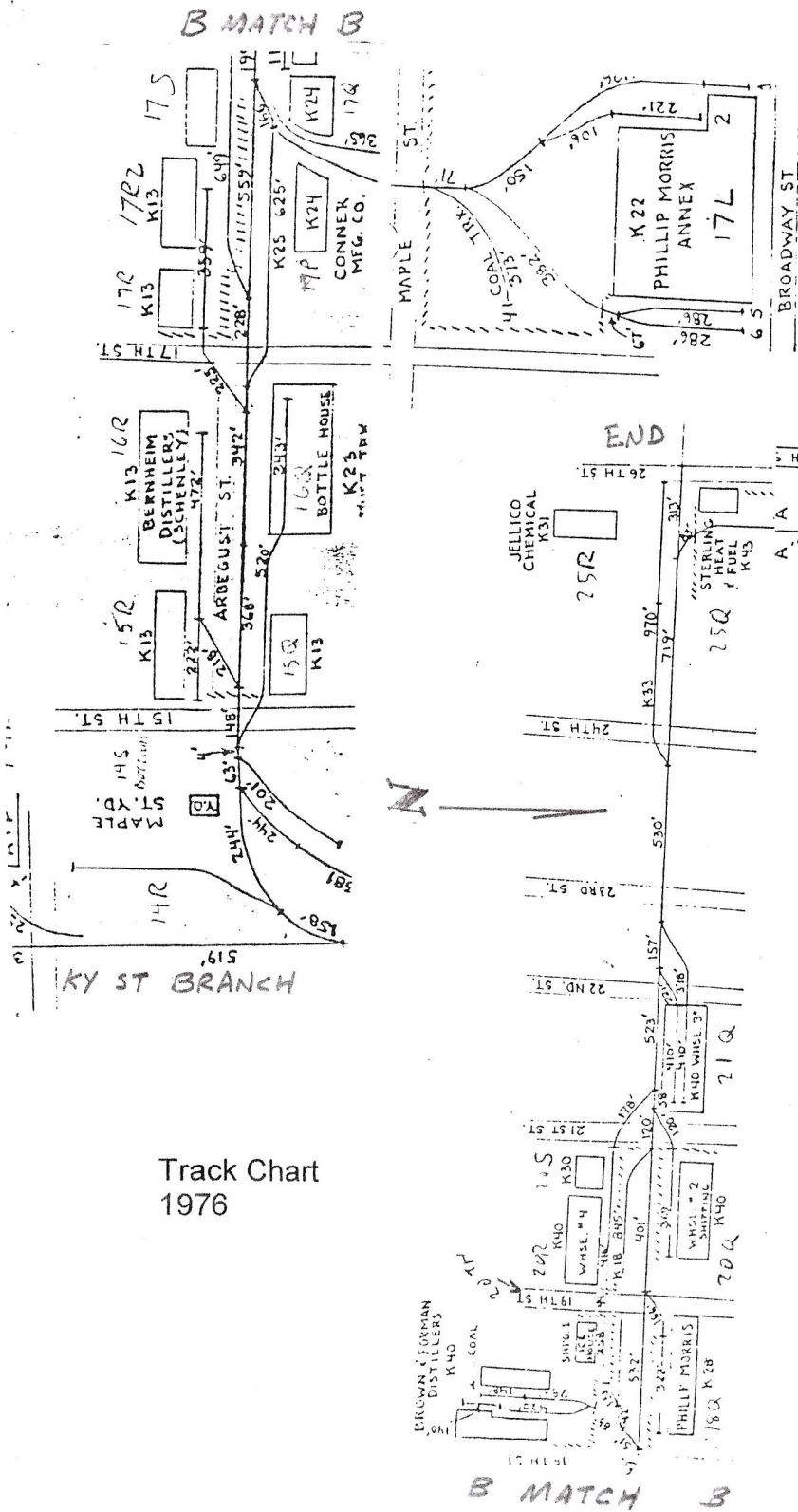
**Photo Archives.** University of Louisville has an extensive archive of photos going back to the 1870's. Some of these are available on line. The Otto Perry Collection on line at Denver Public Library is a good resource for motive power. Your city or state institutions may have similar archives.

## Other:

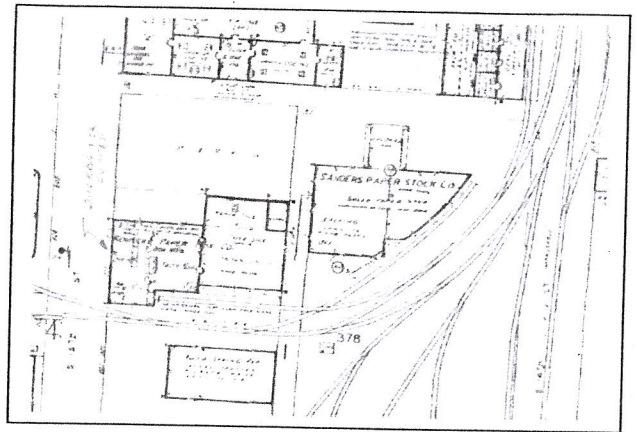
Railroad Historical Societies, Yahoo/facebook groups, your friends and neighbors. My fellow NMRA members were a great resource.

# ARBEGUST STREET BRANCH A RAILROAD YOU CAN MODEL

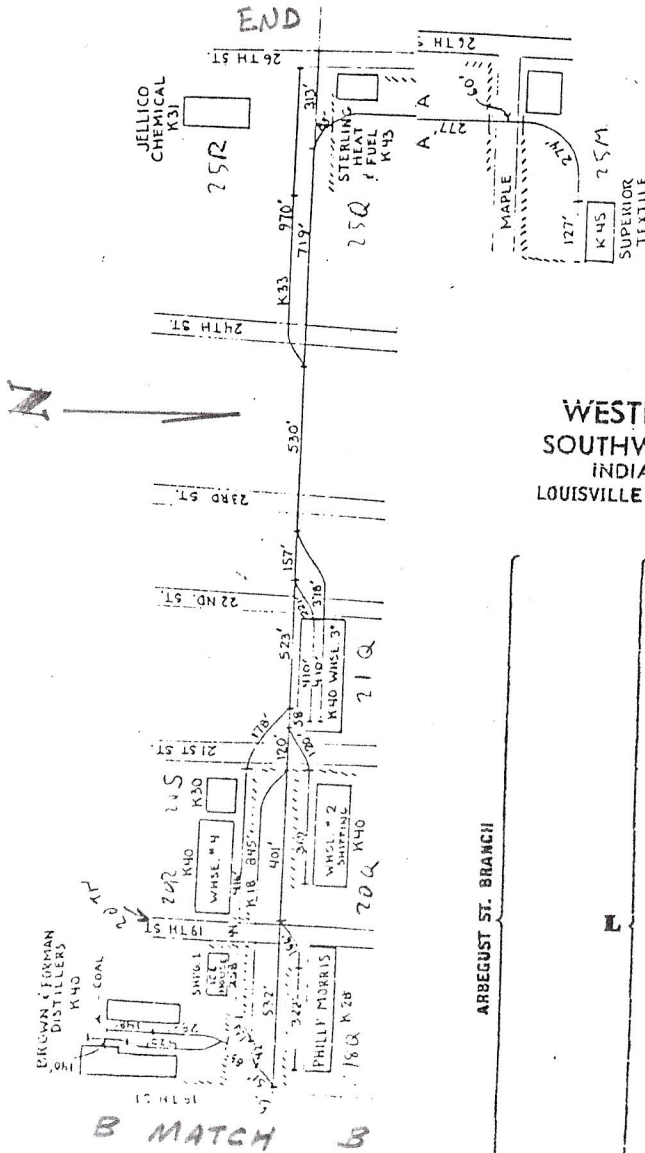
By Bob Dawson, Division 8 MCR NMRA



Track Chart  
1976



Sanborn Map Detail,  
Ouerbacker Coffee.



CT 1000 (below)  
Industries 1945

## WESTERN REGION—Continued SOUTHWESTERN DIVISION—Continued INDIANAPOLIS DIVISION—Continued LOUISVILLE BRIDGE AND TERMINAL RY.—Continued

	Dist. from Junction Main Line
Louisville, Ky. (Junction Ky. Street Br.)	2.1
" (Querbacker Coffee Co.)†	2.1
" (Lamppin's Storage Warehouse)†	2.1
" (Kentucky Bottlers' Supply Co.)†	2.1
" (Love Chemical Co.)†	2.1
" (Ohio River Cooperaage Co.)†	2.2
" (General Box Co. No. 1)†	2.2
" (General Box Co. No. 2)†	2.3
" (Axton-Fisher Tobacco Co. No. 2)†	2.3
" (Bernhelm Distilling Co.)†	2.4
" (Conner Mfg. Co.)†	2.5
" (Goodwin Preserving Co.)†	2.5
" (American Tobacco Co.)†	2.5
" (Brown Foreman Co. No. 1)†	2.6
" (Miller Transfer & Storage Co.)†	2.6
" (Independent Ice & Coal Co.)†	2.6
" (Axton-Fisher Tobacco Co. No. 1)†	2.6
" (General Box Co. No. 3)†	2.7
" (National Biscuit Co. No. 2)†	2.7
" (Leggett & Platt Spring Bed Mfg. Co.)†	3.0
" (Polar Ice & Coal Co.)†	3.0
" (Sam Warren Stone Co.)†	3.1
" (Lawrence Coal & Transfer Co.)†	3.1
" (Southern Independent Oil Co.)†	3.1
" (Brown Foreman Co. No. 2)†	3.1
" (Louisville Hay, Grain & Coal Co.)†	3.1
" (Gaseteria Inc. No. 3)†	3.1
" (Kalak Water Co.)†	3.1
" (Geo. Miller, Jr.—Coal)†	3.1
" (Price Chemical Co.)†	3.2
" (City of Louisville Garbage Plant)†	3.3
" (American Medical Spirits Co.)†	3.3
" (Tube Turns, Inc.)†	3.4
" (End of Arbegust Street Branch)...	3.4